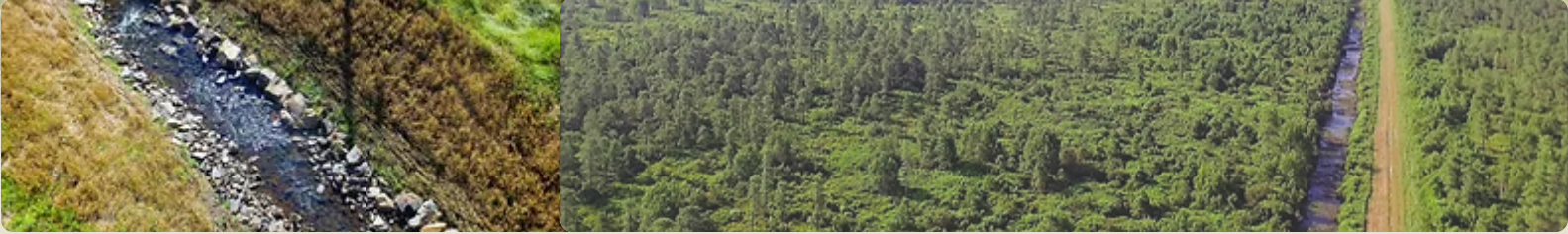


Ecological and environmental engineering to solve  
water quality, flooding, and sustainability problems.



## OUR SERVICES

### ECOSYSTEMS RESTORATION



- Geomorphic Surveying and Analysis
- Planning and Feasibility Studies
- Stream and Wetland Restoration Design
- River Park Design

### STORMWATER MANAGEMENT



- Certified Stormwater Inspections
- Stormwater Repairs and Retrofits
- Green Infrastructure Design
- Rainwater Harvesting Systems

## CONNECT WITH US

### WEB

[www.kbeng.org](http://www.kbeng.org)

### OFFICE LOCATION

219 E Chatham Street  
Suite 205  
Cary, NC 27511

### MAILING ADDRESS

Kris Bass Engineering, PLLC  
625 S Lakeside Drive  
Raleigh, NC 27606

### PHONE

919.960.1552

### EMAIL

[kbass@kbeng.org](mailto:kbass@kbeng.org)

### BARRIER REMOVAL



- Barrier Surveys
- Sediment Transport Studies
- Dam Removal Planning and Design
- Fish Passage Modeling

### SPECIAL STUDIES



- Hydrologic and Hydraulic Modeling (2D)
- Watershed Planning and Modeling
- Riverine Sediment Modeling
- Stormwater, Flood and Flow Monitoring

